

## PEX Rails

Submittal Information  
Revision E: Dec. 15, 2014

### Project Information

Job Name:

Location:

Part No. Ordered:

Engineer:

Date Submitted:

Contractor:

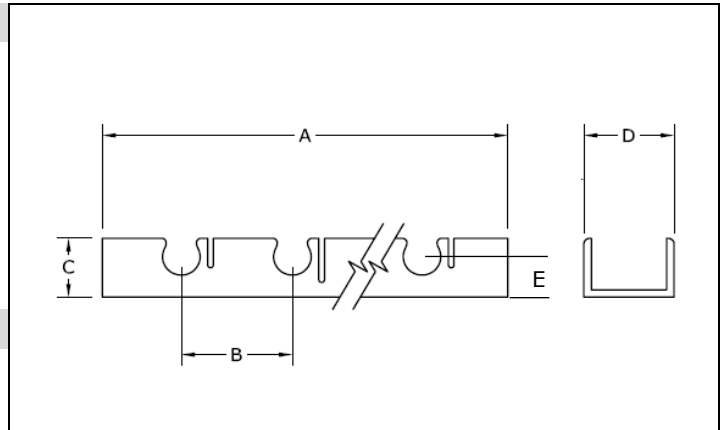
Submitted By:

Manufacturer's Representative:

Approved By:

### Technical Data

Material: Polyethylene (post-consumer products)



### Product Information and Application Use

Plastic PEX Rail secures Uponor PEX tubing products to metal, concrete and wood support structures. **Note:** Suitable fastening hardware is required (not included).

✓	Description	Part Number	A	B	C	D	E	Weight
	1/2" PEX Rail, 6.5 ft.	A5700500	78.0"	2.000"	1.000"	1.500"	0.6240"	1.50 lbs.
	5/8" PEX Rail, 6.5 ft.	A5700625	78.0"	2.000"	1.000"	1.500"	0.6929"	1.50 lbs.
	3/4" PEX Rail, 6.5 ft.	A5700750	78.0"	2.000"	1.000"	1.500"	0.6253"	1.50 lbs.

### Installation

Lay out the tube rails parallel with the floor joists (perpendicular to the tubing layout direction). Space the rails 12 inches from the edge of the wall and 36 inches on center thereafter. Fasten the rails to the subfloor using 1" wood screws, liquid nails or silicone. Refer to the Uponor Radiant Installation Handbook for additional information.

### Standards

N/A

### Codes

N/A

### Listings

N/A

### Related Applications

Radiant Heating and Cooling Systems  
Turf Conditioning Systems  
Permafrost Prevention Systems  
Snow and Ice Melt Systems  
PEX-a Plumbing Systems  
Fire Safety Systems

### Contact Information

Uponor, Inc.  
5925 148<sup>th</sup> Street West  
Apple Valley, MN 55124 USA  
Phone: 800.321.4739  
Fax: 952.891.2008  
www.uponorpro.com

Uponor Ltd.  
2000 Argentia Rd., Plaza 1, Ste. 200  
Mississauga, ON L5N 1W1 CANADA  
Phone: 888.994.7726  
Fax: 800.638.9517  
www.uponorpro.com