

ProPEX® Engineered Polymer (EP) Coupling

Submittal Information
Revision F: Dec. 9, 2014

Project Information

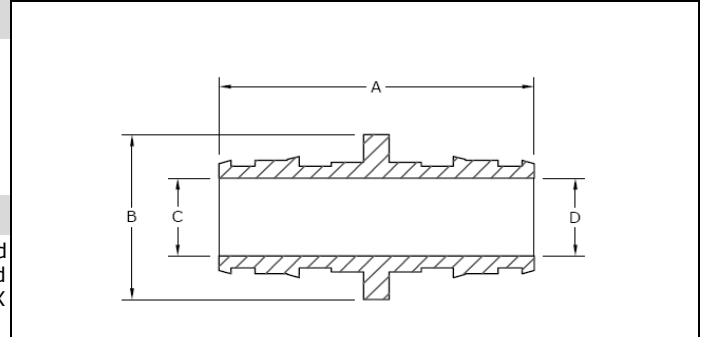
Job Name:	
Location:	Part No. Ordered:
Engineer:	Date Submitted:
Contractor:	Submitted By:
Manufacturer's Representative:	Approved By:

Technical Data

Material: UDEL® Polysulfone, 20% Glass-reinforced (3/8" - 1")
Acudel® Modified Polyphenylsulfone (1 1/4" - 1 1/2")
RADEL® R Polyphenylsulfone (2")

Max. Temp. (no pressure): 320°F (160°C)

Max. Working Temp./Pressure: 210°F (99°C) at 150 psi (1,034 kPa)



Product Information and Application Use

The ProPEX® Engineered Polymer (EP) Coupling is available for use in hot and cold domestic potable water distribution, residential fire safety and radiant heating and cooling systems. Each end of the coupling is manufactured with an Uponor ProPEX fitting for connections to Uponor AquaPEX® or Wirsbo hePEX™ tubing.

✓	Description	Part Number	A	B	C	D	Weight
	ProPEX EP Coupling, 3/8" PEX x 3/8" PEX	Q4773838	1.300"	0.70"	0.280"	0.280"	0.01 lbs.
	ProPEX EP Coupling, 1/2" PEX x 1/2" PEX	Q4775050	1.600"	0.85"	0.405"	0.405"	0.01 lbs.
	ProPEX EP Coupling, 1/2" PEX x 3/4" PEX	Q4775075	1.800"	1.08"	0.405"	0.615"	0.03 lbs.
	ProPEX EP Coupling, 5/8" PEX x 5/8" PEX	Q4776363	1.860"	1.00"	0.538"	0.538"	0.01 lbs.
	ProPEX EP Coupling, 3/4" PEX x 3/4" PEX	Q4777575	2.000"	1.18"	0.615"	0.615"	0.02 lbs.
	ProPEX EP Coupling, 3/4" PEX x 1" PEX	Q4777510	2.300"	1.34"	0.615"	0.818"	0.04 lbs.
	ProPEX EP Coupling, 1" PEX x 1" PEX	Q4771010	2.500"	1.42"	0.818"	0.818"	0.04 lbs.
	ProPEX EP Coupling, 1 1/4" PEX x 3/4" PEX	Q4771307	2.625"	1.75"	0.989"	0.615"	0.05 lbs.
	ProPEX EP Coupling, 1 1/4" PEX x 1" PEX	Q4771310	2.875"	1.75"	0.989"	0.818"	0.06 lbs.
	ProPEX EP Coupling, 1 1/4" PEX x 1 1/4" PEX	Q4771313	3.000"	1.75"	0.989"	0.989"	0.07 lbs.
	ProPEX EP Coupling, 1 1/2" PEX x 3/4" PEX	Q4771507	2.875"	2.13"	1.109"	0.615"	0.07 lbs.
	ProPEX EP Coupling, 1 1/2" PEX x 1" PEX	Q4771510	3.125"	2.13"	1.109"	0.818"	0.08 lbs.
	ProPEX EP Coupling, 1 1/2" PEX x 1 1/4" PEX	Q4771513	3.500"	2.13"	1.109"	0.989"	0.09 lbs.
	ProPEX EP Coupling, 1 1/2" PEX x 1 1/2" PEX	Q4771515	3.625"	2.13"	1.109"	1.109"	0.10 lbs.
	ProPEX EP Coupling, 2" PEX x 1 1/2" PEX	Q4772015	4.120"	2.20"	1.514"	1.109"	0.19 lbs.
	ProPEX EP Coupling, 2" PEX x 2" PEX	Q4772020	4.544"	2.20"	1.514"	1.514"	0.24 lbs.

Installation

Use ProPEX Rings to make the fitting. Refer to the Uponor Professional Plumbing Installation Guide, Radiant Floor Heating Installation Handbook or AquaSAFE™ Residential Fire Sprinkler Installation Guide for more information.

Standards	Codes	Listings
CAN/CSA B137.5; ASTM F877; ASTM F1960	IPC; UPC; NSPC; NPC of Canada	NSF U.P. CODE; ANSI/NSF 14- and 61-certified; HUD MR 1269; ICC ESR 1099; UL 1821 and ULC/ORD-C199P (except Q4773838 and Q4776363); cQAiUs P321

Related Applications

PEX-a Plumbing Systems
Hydronic Radiant Heating and Cooling Systems
Snow and Ice Melting Systems
Permafrost Protection Systems
Turf Conditioning Systems
AquaSAFE Fire Safety Systems

Contact Information

Uponor, Inc.
5925 148th Street West
Apple Valley, MN 55124 USA
Phone: 800.321.4739
Fax: 952.891.2008
www.uponorpro.com

Uponor Ltd.
2000 Argentia Rd., Plaza 1, Ste. 200
Mississauga, ON L5N 1W1 CANADA
Phone: 888.994.7726
Fax: 800.638.9517
www.uponorpro.com