

Section 2.1

Main Menu

The Uponor Configuration Tool (UCT) software (A9090000) includes an intuitive, easy-to-use interface for navigation. From the Main Menu screen (**Figure 2.1-1**), a user clicks buttons to access and setup mechanical system functionality.

This section provides an overview of all the Main Menu screen buttons and references the sections within the manual that provide step-by-step instructions to setup the Network System for proper control of mechanical systems.

System Setup — Section 2.2

- Naming the system
- Verifying the system address
- Setting the system location
- Setting Daylight Saving Time (DST)
- Setting up e-mail information for alarms

Network Setup — Section 2.3

- Accessing the Network Setup screen
- Checking port settings
- Verifying remote access settings

Schedules and Calendars — Section 2.17

- Setting a schedule
- Editing a time block
- Setting time blocks to occur on multiple days
- Setting the duration for a schedule
- Using schedule overrides
- Adding dates to the vacation calendar
- Setting a date range on the vacation calendar
- Removing vacation days from the calendar
- Overriding vacation mode
- Using the schedule override calendar

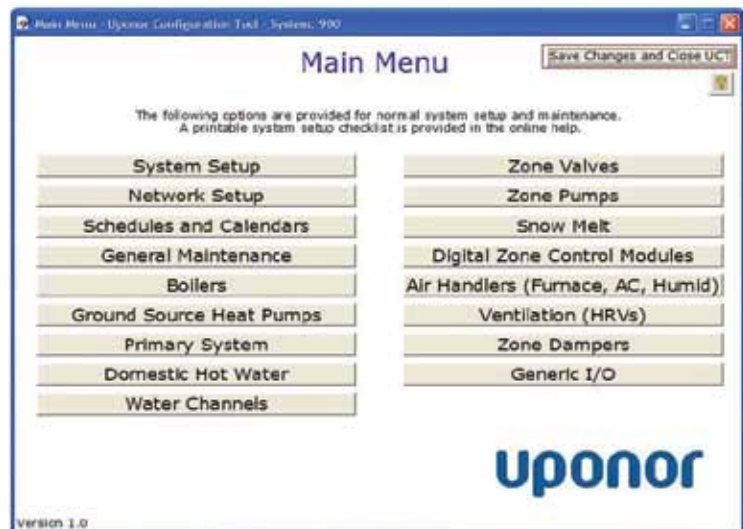


Figure 2.1-1: Main Menu Screen

Boilers — Section 2.5

- Selecting the number of boilers
- Setting boiler-staging intervals
- Setting the boiler type
- Setting boiler limits
- Setting boiler-modulation options

Ground Source Heat Pumps — Section 2.7

- Enabling GSHPs
- Configuring multiple heat pumps
- Enabling boiler backup or boost
- Configuring multiple tanks (hot and cold)
- Setting up off-peak tank charge
- Adjusting tank setpoints
- Using GSHP settings

Primary System — Section 2.6

- Setting primary loop temperature limits
- Setting up a pressure sensor

Domestic Hot Water — Section 2.8

- Setting the number of domestic hot water (DHW) tanks and tank setpoints
- Setting up a single DHW tank with recirculation
- Setting up boiler purge
- Turning off the primary pump during DHW calls
- Setting up Legionella prevention
- Field definitions

Water Channels — Section 2.9

- Setting up device existence
- Setting up and viewing equipment
- Setting up mixing settings

Zone Valves — Section 2.11

- Naming zone valves
- Viewing zone-valve information
- Setting up zone valves for heating

Zone Pumps — Section 2.10

- Naming zone pumps
- Viewing zone-pump information
- Adding a zone-pump start delay
- Setting a zone pump for heating and/or cooling
- Assigning a zone pump to Water Channel 6 (WC6)
- Setting zone-pump operation during a high-fire demand
- Viewing supply and return temperatures

Snow Melt — Section 2.12

- Viewing the status of snow-melt zones
- Setting up mixing or secondary pumps
- Attaching zone pumps
- Setting up Idle feature
- Setting snow-melt operating conditions

Digital Zone Control Modules — Section 3.1

- Elements of the Digital Zone Control Module (DZCM) screen
- Naming the service area
- Navigating the DZCM page
- Assigning WTC to actuators

Thermostat Status Tab — Section 3.2

- Reading definitions
- Zone status definitions
- Mode status definitions

Thermostat Setup Tab — Section 3.3

- Setting basic zone information
- Verifying Sensors Attached fields
- Setting thermostat units and calibration
- Setting up thermostat functionality
- Assigning mechanical equipment

Thermostat Setup 2 Tab — Section 3.4

- Assigning a schedule
- Setting backlighting timeout
- Air handler and heat recover ventilator (HRV) assignments
- Mixing assignments
- Stage assignments

Thermostat Mode Tab — Section 3.5

- Setting the mode
- Setting the primary thermostat
- Linking to Vacation and Schedule Override calendars

Thermostat Setpoints Tab — Section 3.6

- Adjusting normal room temperatures and settings
- Adjusting setback temperatures and settings
- Setting minimum and maximum temperatures

Thermostat Active Setpoints Tab — Section 3.7

- Viewing setpoints and operating modes

Setting Up a Radiant Floor Heating Zone — Section 3.8

- Wiring
- Equipment assignments
- Sequence of operations

Air Handlers — Section 2.13

- Naming the service area
- Setting a timeout for manual fan runtime
- Setting up shutoff timeout
- Setting up fan operation for humidification
- Setting up fan operation for dehumidification

Ventilation — Section 2.14

- Naming the service area
- Enabling HRV manual runtime
- Setting up 20/40 operation
- Interlocking HRVs and air handlers
- Connecting volatile organic compound/carbon dioxide (VOC/CO₂) sensors
- Dehumidifying air zones with an HRV

Zone Dampers — Section 2.15

- Checking the status of a Zone Valve and Damper Control (ZVD)
- Naming zone dampers
- Understanding zone damper elements
- Setting up zone dampers for normally open operation

Generic Inputs and Outputs — Section 2.16

- Naming inputs and outputs
- Input elements
- Output elements

General Maintenance

The following options are available from the General Maintenance screen.

Saving and Loading Databases — Section 5.3

- Organizing and naming databases
- Saving databases
- Loading databases

Saving to and Loading from Flash — Section 5.1

- Saving a control's settings to flash
- Saving all controls' settings to flash
- Loading a control's settings from flash

Setting the Date and Time — Section 2.4

- Setting the date
- Setting the time

The General Maintenance screen includes a number of buttons for access to additional features; see **Figure 2.1-2**.

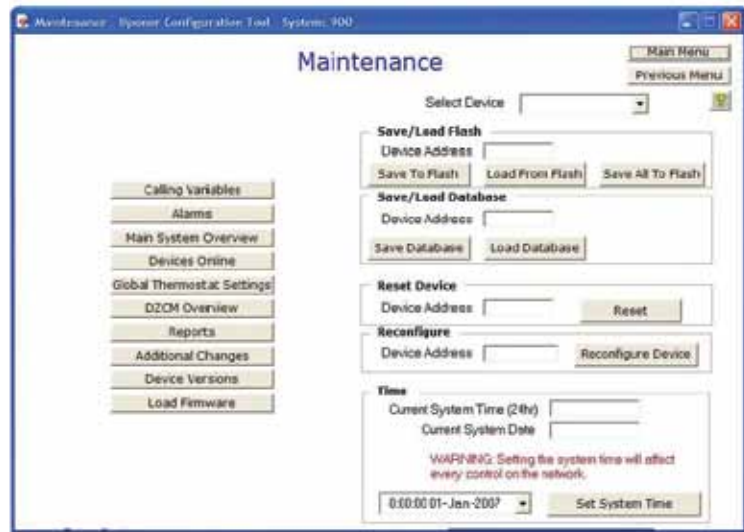


Figure 2.1-2: Maintenance Screen

Calling Variables — Section 4.1

- Calling variables on the cabinet controls
- Calling variables on DZCMs
- Understanding calling variable values and using the Analog-to-Digital (A>D) converter
- Calling variables definitions

Alarms — Section 4.2

- Primary pump
- DHW and recirculation pumps
- Pressure sensor
- Mix devices
- Secondary pumps
- Generic inputs
- High temperature
- Low temperature

Main System Overview — Section 4.3

- Using the Main System Overview screen

Devices Online — Section 4.4

- Viewing devices online
- Reconfiguring the system

Global Thermostat Settings — Section 4.5

- Air maximum
- Air minimum
- Cool air
- Cool floor (heating)
- Floor maximum
- Floor minimum
- Heat air
- Heat floor
- Vacation cool air
- Vacation floor
- Vacation heat

DZCM Overview — Section 4.6

- Using the DZCM Overview screen
- DZCM Overview screen definitions

System Reports — Section 4.7

- Accessing Network System reports
- Report definitions

Additional Changes — Section 4.8

- Accessing the Additional Changes screen
- Inserting comment lines
- Sample code
- Additional features

Device Versions — Section 4.9

- Checking device versions

Load Firmware — Section 5.2

- Verifying the firmware version for a control
- Using the flashloader utility