

Section 2.4

Setting the Date and Time

You must set the date and time accurately so the Network System can correctly manage schedules and calendars. Schedules and calendars are critical to managing setback settings, which help users save energy and money.

This section covers the following topics.

- Setting the date
- Setting the time

Before proceeding, make sure the following steps are complete.

- All Uponor Configuration Tool (UCT) software (A9090000) components are installed (**Section 1.5**).
- The computer is correctly connected to the Network System (**Section 1.6**).

Setting the Date

Refer to the following steps to set the date.

1. From the **Main Menu**, click on **General Maintenance** as shown in **Figure 2.4-1**. The Maintenance screen, shown in **Figure 2.4-2**, will open.
2. Click on the dropdown arrow for **Select Device** as shown in **Figure 2.4-3**. This lists all the controls the UCT detects. Select the Router Main Control (RTR) (A9011000) which controls the date and time for the Network System.



Figure 2.4-1: Main Menu Screen

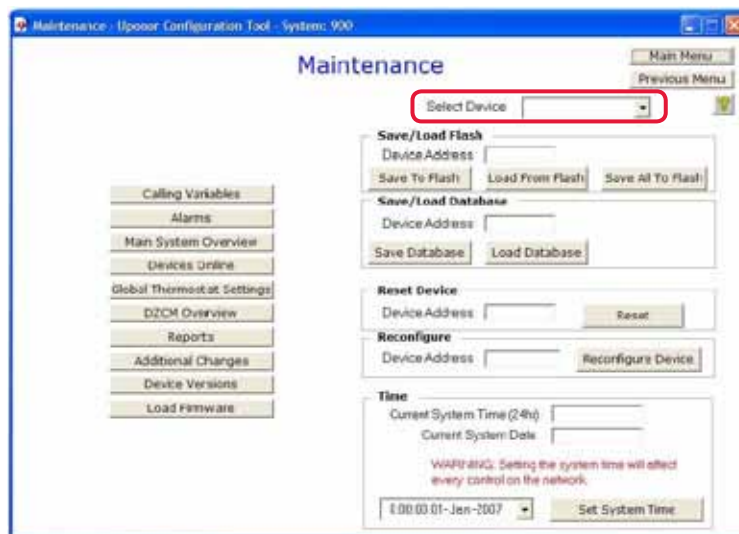


Figure 2.4-2: Maintenance Screen

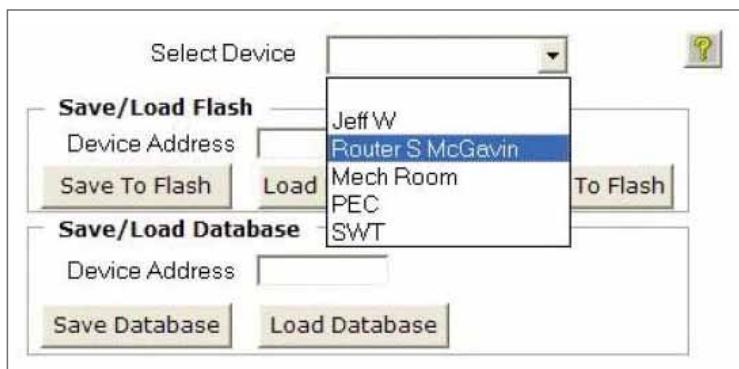


Figure 2.4-3: Device List

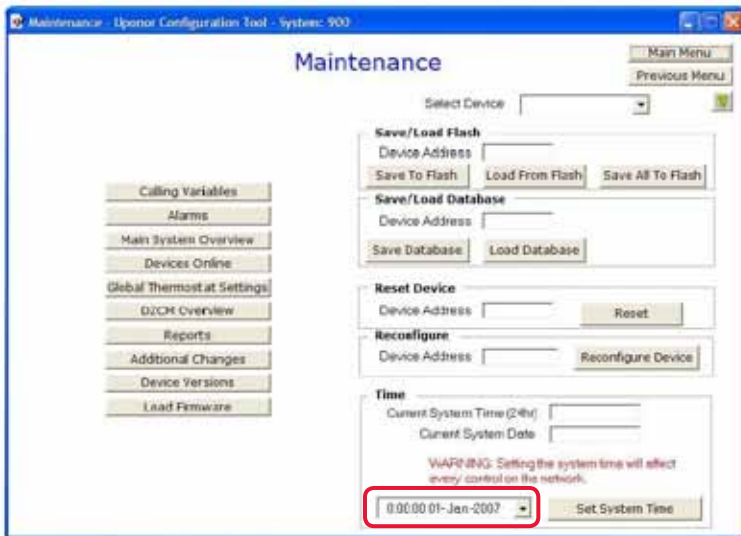


Figure 2.4-4: Calendar Dropdown Box

3. Click on the dropdown arrow to the left of the Set System Time button; see **Figure 2.4-4**. A calendar, shown in **Figure 2.4-5**, will open.
4. Navigate to the desired date. Use the arrows to move forward or backward one month. Click on the month to access a dropdown list of all months. Click on the year to access a list of years.
5. Click on the desired date, and the window will close.

Note: It may take up to 30 seconds for the date to update in the window

Setting the Time

Refer to the following steps to set the time.

1. From the Main Menu, click the General Maintenance button, shown in **Figure 2.4-6**. The Maintenance Screen, shown in **Figure 2.4-7**, will open.

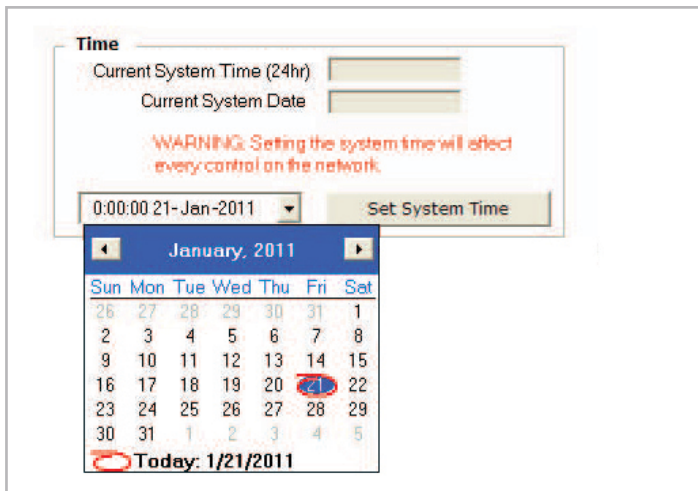


Figure 2.4-5: Set the Date

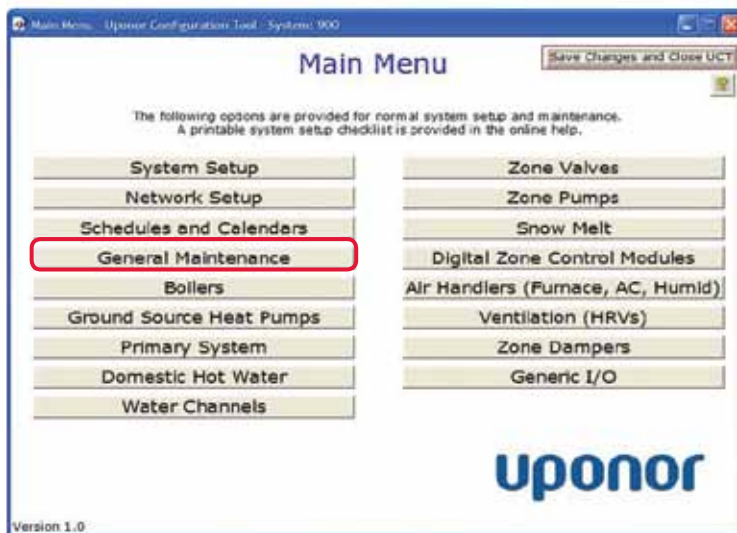



Figure 2.4-6: Main Menu Screen

2. Click on the dropdown arrow for Select Device as shown in **Figure 2.4-8**. This lists all controls the UCT detects. Select the RTR which controls the date and time for the Network System.

3. In the Current System Time field, shown in **Figure 2.4-9**, highlight the time segment (hour, minute or second) to update and enter the new time. Repeat for the other time segments as necessary.

 **Important:** Enter hours based on a 24-hour clock (e.g., for 4 p.m. enter 16:00).

4. Click the **Set System Time** button.

After a short delay (up to 30 seconds), the updated time will display in the Current System Time field.

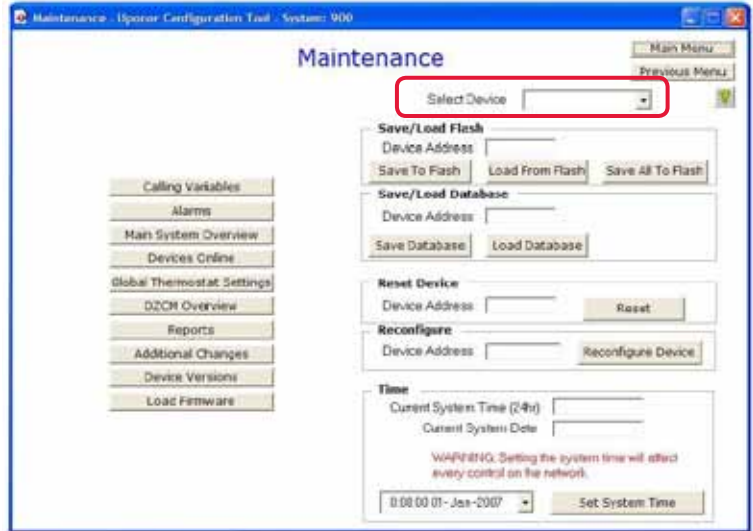


Figure 2.4-7: Select Device Field on Maintenance Screen

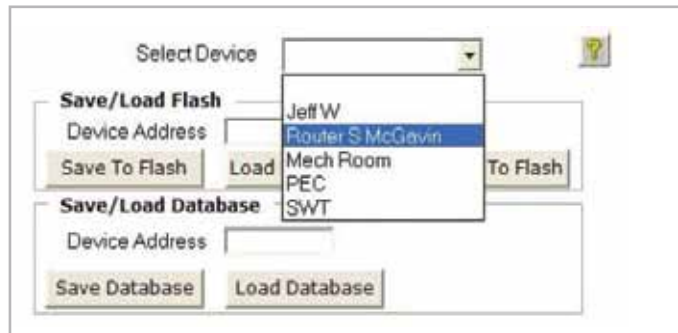


Figure 2.4-8: Device List

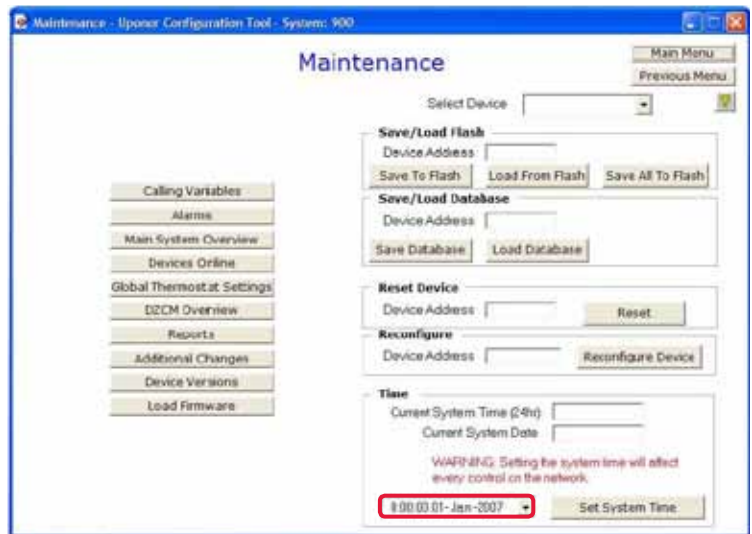


Figure 2.4-9: Time and Date Fields on Maintenance Screen

