

Section 4.2

Alarms

Uponor configures the Network System in the factory to monitor a defined list of events called alarms. Network System controls continually scan for these events. When the system detects, or triggers, an alarm, it will display as Active in the Alarms window in the Uponor Configuration Tool (UCT) software (A9090000). The installer can setup the Network System to send alarms to an e-mail account; see **Section 2.2: System Setup** for additional information.

Important: An alarm will NOT trigger or be sent to an e-mail account if the output or device is not commissioned. See the Commissioned Checkbox subsection in **Section 1.7: Uponor Configuration Tool (UCT) Elements**.

The Network System includes the following alarms.

- Primary Pump
- Domestic Hot Water (DHW)/Recirculation Pumps
- Pressure Sensor
- Mix Devices
- Secondary Pumps
- Generic Inputs
- High Temperature
- Low Temperature

Before proceeding, make sure the following steps are complete.

- All UCT software components are installed (**Section 1.5**).
- The computer is correctly connected to the Network System (**Section 1.6**).

Navigating to the Alarm Screen

Refer to the following steps to access the Alarm screen and review the active alarms.

1. From the **Main Menu** screen, click on the **General Maintenance** button shown in **Figure 4.2-1**.
2. On the **General Maintenance** screen, click on the **Alarms** button shown in **Figure 4.2-2** to display the Alarms screen shown in **Figure 4.2-3**.

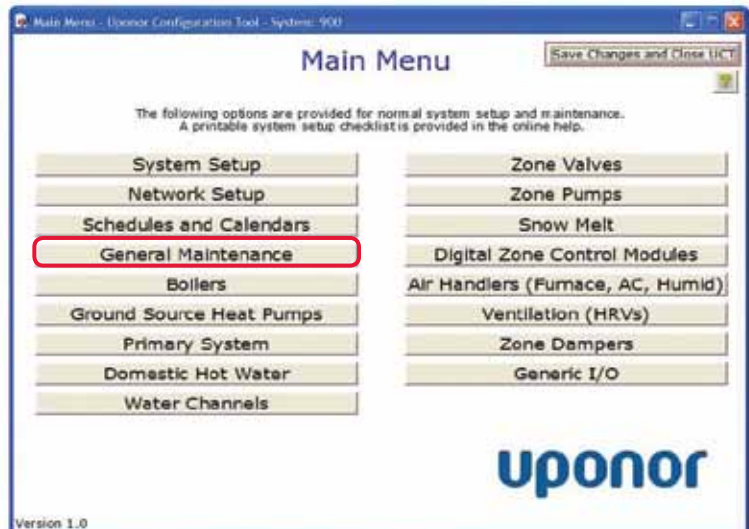


Figure 4.2-1: Main Menu Screen

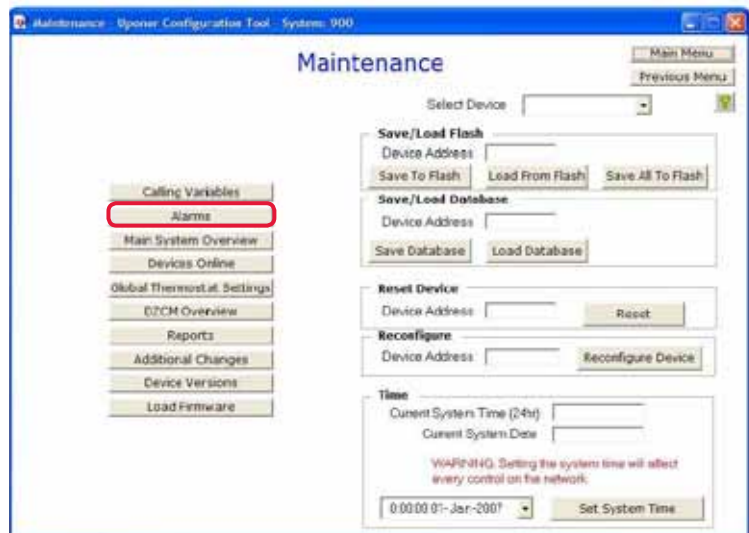


Figure 4.2-2: General Maintenance Screen



Figure 4.2-3: Alarms Screen

In **Figure 4.2-3**, the Show All box is checked to show all potential alarms that are set for the Network System. When the Show All box is not checked, the Network System will only display the alarms associated with the devices it detects in the installation. For example, if there is no Generic Input/ Output Control (GIO) connected to the Network System, the Alarm list for those inputs will not be shown on the screen.

Alarm Type and Fault Conditions

Primary Pump Alarm: This alarm will trigger if the Primary Equipment Control (PEC) (A9012000) is activating the pump, but the feedback signal from the Pump Relay (A9013030) is not registering.

Potential causes:

- The Cat5 cable is unplugged from the PEC.
- The Cat5 cable is unplugged from the pump control.
- The Cat5 cable connecting the PEC and pump control is incorrectly wired. Test the cable.

DHW/Recirc Pump Alarm: This alarm will trigger if the PEC is activating the pump, but the feedback signal from the Pump Relay is not registering.

Potential causes:

- The Cat5 cable is unplugged from the PEC.
- The Cat5 cable is unplugged from the Pump Relay.
- The Cat5 cable connecting the PEC and the Pump Relay is incorrectly wired. Test the cable.

Pressure Sensor Alarm: This alarm will trigger if the Pressure Switch Installed option is checked on the Primary System configuration page and the PEC is not reading the feedback signal from the pressure switch.

Potential causes:

- System pressure is below 7 psi (or configured setting).
- The Cat5 cable is unplugged from the PEC.
- The Cat5 cable is unplugged from the pressure switch.
- The Cat5 cable connecting the PEC and the pressure switch is incorrectly wired.

Mix Devices Alarm: If the mixing device is a three-way mixing valve, then the alarm will trigger if the feedback voltage (0-10VDC) signal is different from the output voltage. If the mixing device is an injection pump, the alarm will trigger if the Supply Water Temperature Control (SWT) (A9013000) is activating the pump, but the feedback signal from the Pump Relay is not registering.

Potential causes:

- The Cat5 cable is unplugged from the SWT.
- The Cat5 cable is unplugged from the valve control.
- The Cat5 cable connecting the SWT and the valve control is incorrectly wired.
- The feedback wire in the valve control is not connected or connected to the wrong terminals.

Secondary Pumps Alarm: This alarm will trigger if the SWT is activating the pump, but the feedback signal from the Pump Relay is not registering.

Potential causes:

- The Cat5 cable is unplugged from the SWT.
- The Cat5 cable is unplugged from the Pump Relay.
- The Cat5 cable connecting the SWT and the Pump Relay is incorrectly wired. Test the cable.

Generic Input Alarm: The Generic Input alarms will trigger when their associated inputs on the GIO (A9011600) detect a switch has closed (short condition).

Low Temperature Alarm: This alarm will trigger if any of the thermostats on a particular Digital Zone Control Module (DZCM) (A9011500) reach their low temperature protection limit of 35°F (2°C).

High Temperature Alarm: This alarm will trigger if any of the thermostats on a particular DZCM hit their high temperature protection limit of 95°F (35°C).