



PLUMBING SYSTEMS  
EP OPPOSING-PORT  
MULTI-PORT TEES

LAUNCH SHEET



## New EP Opposing-port Multi-port Tees Move the Water Where You Want it to Go

You'll get the design and installation flexibility you need for today's residential, commercial or multi-family plumbing applications with Uponor's advanced Engineered Plastic (EP) Opposing-port Multi-port Tees. Now available with up to eight outlets in either flow-through or branch configurations, they are ideal for applications such as zone plumbing in two directions.

The reduced number of connections provided by these new advanced, molded, one-piece multi-port tees can greatly enhance flow performance.

In addition, this far more compact approach can be easily mounted within a wall, floor or ceiling without the need for an access panel.

The new Multi-port Tees feature Uponor's exclusive ProPEX® connections. Unaffected by aggressive water issues, the new tees provide the corrosion-free, non-pitting and non-scaling performance that is not possible with copper or brass. They also address all NSF lead-content initiatives and code standards.

Opposing-port Multi-port Tees are yet another example of Uponor Logic at work and one more reason to choose Uponor's Wirsbo AQUAPEX® tubing and ProPEX fitting system on both single-family and multi-family plumbing projects.

**Industry Standards, Listings and Codes Met by ProPEX EP Opposing-port Multi-port Tees:**

**Hydrostatic Temperature and Pressure Ratings:**

- 180°F at 100 psi

**Applicable Codes:**

- UPC
- IPC
- NSPC
- NPC of Canada

**Manufacturing Standards:**

- ASTM F877
- ASTM F1960
- CSA B-137.5

**Product Listings:**

- NSF 14 and 61
- IAPMO or UPC Code
- ICC ESR 1099

**Fire-rated Assemblies:**

- UL V444, U372

**Features and Benefits:**

- Designed for all residential, commercial or multi-family applications
- Flow-through or branch configurations
- Ideal for a zone plumbing application
- Lower costs versus metal options
- Does not require an access panel

# Uponor EP Residential Product Family Additions



3/4" EP Flow-through Opposing-port Multi-port Tee, 3 outlets (Q2337557)



3/4" EP Flow-through Opposing-port Multi-port Tee, 4 outlets (Q2347557)



3/4" EP Flow-through Opposing-port Multi-port Tee, 6 outlets (Q2367557)



3/4" EP Branch Opposing-port Multi-port Tee, 3 outlets (Q2337550)

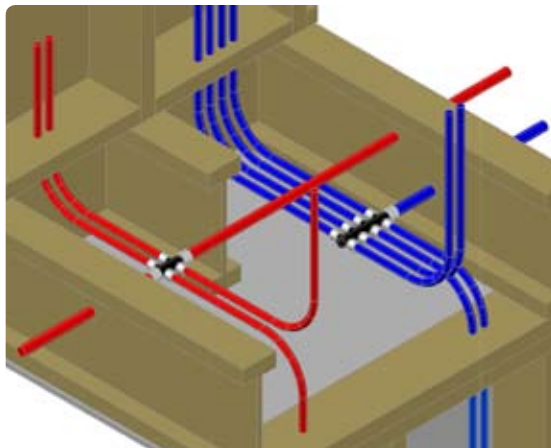


3/4" EP Branch Opposing-port Multi-port Tee, 4 outlets (Q2347550)



3/4" EP Branch Opposing-port Multi-port Tee, 8 outlets (Q2387550)

Part No.	Description	Pkg. Qty.	Application (optional)	List Price (ea.)
Q2337557	3/4" EP Flow-through Opposing-port Multi-port Tee, 3 outlets	10	Residential	\$15.60
Q2347557	3/4" EP Flow-through Opposing-port Multi-port Tee, 4 outlets	10	Residential	\$21.15
Q2367557	3/4" EP Flow-through Opposing-port Multi-port Tee, 6 outlets	10	Residential	\$32.45
Q2337550	3/4" EP Branch Opposing-port Multi-port Tee, 3 outlets	10	Residential	\$15.65
Q2347550	3/4" EP Branch Opposing-port Multi-port Tee, 4 outlets	10	Residential	\$21.00
Q2387550	3/4" EP Branch Opposing-port Multi-port Tee, 8 outlets	10	Residential	\$35.60



Application drawing showing EP Opposing-port Multi-port Tees, Q2387550 (Cold) and Q2347557 (Hot).