

Brass ProPEX Adapter

Submittal Information
Component

Project Information

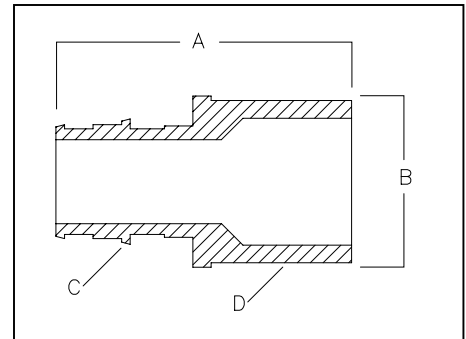
Job Name: _____	Part No. Ordered: _____
Location: _____	Quantity Ordered: _____
_____	P.O. Number: _____
Engineer: _____	Date Submitted: _____
Contractor: _____	Submitted By: _____
Mfg Rep: _____	Approved By: _____

Technical Data

Material.....B140 Copper Alloy UNS C31400
.....or B16 Copper Alloy UNS C36000

Product Information and Application Use

The brass ProPEX copper adapters are available for use in hot and cold domestic potable water systems. Fittings are also approved for use in any hydronic heating systems. Each end of the adapters are manufactured with the Wirsbo ProPEX fitting for connections to hePEX plus or AQUAPEX tubing.



Ordering Information

Dimensional Information

✓ Description	Part Number	A	B	C	D	E	Weight
[] ProPEX Adapter, 3/8" PEX x 1/2" Copper	Q4513850	1.32"	0.84"	3/8"	1/2"	N/A	0.10 lbs
[] ProPEX Adapter, 1/2" PEX x 1/2" Copper	Q4515050	1.44"	0.84"	1/2"	1/2"	N/A	0.10 lbs
[] ProPEX Adapter, 1/2" PEX x 3/4" Copper	Q4515075	1.83"	1.06"	1/2"	3/4"	N/A	0.10 lbs
[] ProPEX Adapter, 3/4" PEX x 1/2" Copper	Q4517550	1.67"	1.19"	3/4"	1/2"	N/A	0.10 lbs
[] ProPEX Adapter, 3/4" PEX x 3/4" Copper	Q4517575	2.04"	1.19"	3/4"	3/4"	N/A	0.20 lbs
[] ProPEX Adapter, 3/4" PEX x 1" Copper	Q4517510	2.27"	1.35"	3/4"	1"	N/A	0.30 lbs
[] ProPEX Adapter, 1" PEX x 1" Copper	Q4511010	2.51"	1.35"	1"	1"	N/A	0.30 lbs

Code Approvals/Standards

ANSI/NSF 14 and 61 certified
ASTM F 877
ASTM F 1960
CAN/CSA B137.5
ICBO ER 5142
IPC
UPC
NSPC
SBCCI (PST and ESI Report No. 9661)

Installation

- Use the appropriate PEX ring for the tubing being connected.
- Do not sweat within 18 inches of the ProPEX fitting.
- Refer to the Wirsbo AQUAPEX Installation Handbook for additional information.

Related Applications

AQUAPEX — Hot and Cold Potable Water Distribution
Wirsbo Radiant Floor Heating Systems
Wirsbo Permafrost Heating Systems
Wirsbo Snow & Ice Melting Systems

