

# Sluseholmen



## Uponor involvement

- ✓ About 200 shaft units with components for underfloor heating and water heating.  
This prefab shaft unit has been newly developed by Uponor, KPC, Midtconsult and VVS Søberg in close cooperation.  
The unit consists of a prefab basic unit with additional modules for flexible, individual adaptation.  
Stage 2 and 3 in this project are coming up with more than 400 units, in cooperation with the same contractor and HVAC installer.

- ✓ Project 'Sluseholmen' is a comprehensive floor building project with blocks in Copenhagen's new and prestigious canal residential area.

### Participants:

Builder:	Danica Pension
Contractor:	KPC
Engineer:	Midtconsult
Plumbing Installer:	VVS Søberg
Architect:	Årstiderne Arkitekter

## Flexible shaft units shorten installation time in house building

The Uponor project 'Sluseholmen' has served as inspiration for developing a brand new and advantageous plumbing solution. As a result, Uponor now offers a new, optimized and well structured, compact and easy to use prefab basic unit with flexible connectivity options for managing water and heating in varying types of housing.  
From now on, Uponor provides the construction market with these prefab shaft units, primarily intended for modern floor building and terraced houses.

### Flexible shaft units shorten installation time in house building

The Uponor project 'Sluseholmen' has served as inspiration for developing a brand new and advantageous plumbing solution. As a result, Uponor now offers a new, optimized and well structured, compact and easy to use prefab basic unit with flexible connectivity options for managing water and heating in varying types of housing.  
From now on, Uponor provides the construction market with these prefab shaft units, primarily intended for modern floor building and terraced houses.

### Primary benefits:

- Much faster, smoother and flawless plumbing installation
- Flexibility due to possible additional connections to the basic unit
- Uniform technical quality, design, product flow and service

- Straight, nice and proper result, kept in one place on little space
- Including electrical switchboard, mounted on top of the unit

Uponor has developed this new shaft unit in cooperation with KPC, Midtconsult and VVS Søbørg, with valuable input from the Uponor factory in Celle, Germany. The new Uponor units are already a required option for an increasing number of planned projects on the construction market.

Uponor sees great potential for the newly developed prefab plumbing solution. Along with our products, we advise about the right choice of solutions, dimensioning etc. for a given project, always carefully considering indoor climate, sustainability, and long-term, proper solutions.

The first stage of project 'Sluseholmen' is now completed, and Uponor initiate stage 2 and 3, still using the newly developed shaft units.

---

## Project Facts:

Completion  
2018

---

## Partners

### Participants:

Builder: Danica Pension  
Contractor: KPC  
Engineer: Midtconsult  
Plumbing Installer: VVS Søbørg  
Architect: Årstiderne  
Arkitekter

---

## Sluseholmen Copenhagen

### **Flexible shaft units shorten installation time in house building**

The Uponor project 'Sluseholmen' has served as inspiration for developing a brand new and advantageous plumbing solution. As a result, Uponor now offers a new, optimized and well structured, compact and easy to use prefab basic unit with flexible connectivity options for managing water and heating in varying types of housing.

From now on, Uponor provides the construction market with these prefab shaft units, primarily intended for modern floor building and terraced houses.

### Primary benefits:

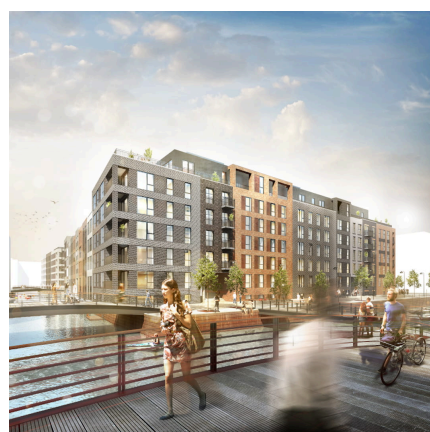
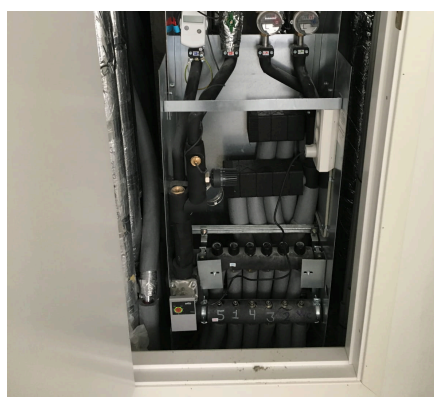
- Much faster, smoother and flawless plumbing installation
- Flexibility due to possible additional connections to the basic unit
- Uniform technical quality, design, product flow and service
- Straight, nice and proper result, kept in one place on little space
- Including electrical switchboard, mounted on top of the unit

Uponor has developed this new shaft unit in cooperation with KPC, Midtconsult and VVS Søbørg, with valuable input from the Uponor factory in Celle, Germany. The new Uponor units are already a required option for an increasing number of planned projects on the construction market.

Uponor sees great potential for the newly developed prefab plumbing solution. Along with our products, we advise about the right choice of solutions, dimensioning etc. for a given project, always carefully considering indoor climate, sustainability, and long-term, proper solutions.

The first stage of project 'Sluseholmen' is now completed, and Uponor initiate stage 2 and 3, still using the newly developed shaft units.

## Sluseholmen





Uponor North America

Uponor North America  
5925 148th Street West  
Apple Valley, MN 55124

General: 800.321.4739  
Fax: 952.891.2008

W [www.uponor.com](http://www.uponor.com)